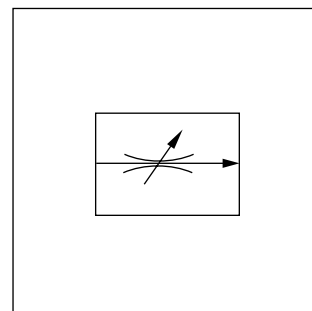
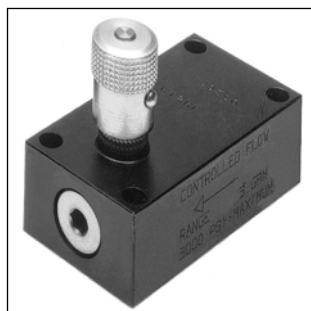


Characteristics / Ordering Code

Manatrol 2-way flow control valves for pressure compensated regulation of the flow. As a consequence of pressure changes, the set value can vary by $\pm 5\%$ within the tolerance range. Changes in viscosity and in temperature have the same effect and are to be observed.

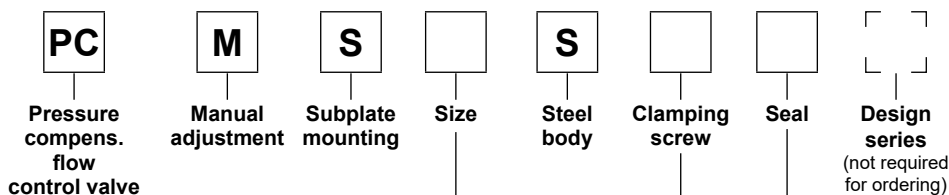


Characteristic values

Size	Max. press. [bar]	Flow control		Weight [kg]
		Q ¹⁾ [l/min]	Δp [bar]	
400	210	1 - 10	7	0.77
600	210	2 - 25	7	1.23
800	210	6 - 60	11	2.50
1200	210	10 - 100	11	3.18
1600	210	19 - 190	11	7.41

5

Ordering code



Code	Nominal size
400	400
600	600
800	800
1200	1200
1600	1600

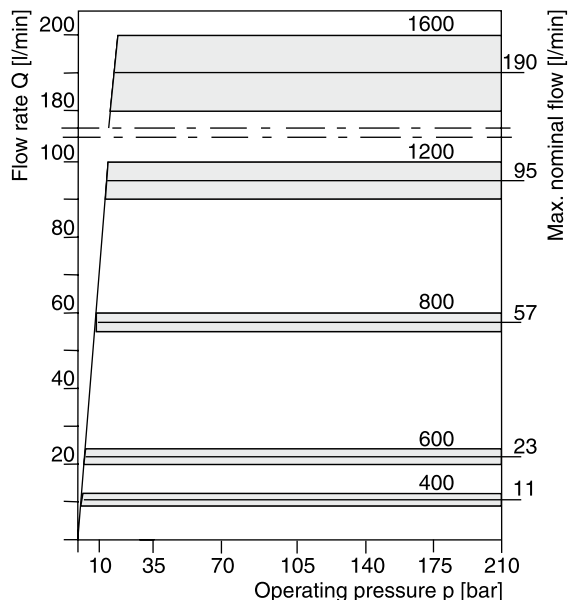
Code	Seal
omit	NBR
V	FPM

Code	Clamping screw
omit	Hexagon socket
F	With knurled knob

Bold letters = Short-term availability

¹⁾ Min. and max. flow rate.

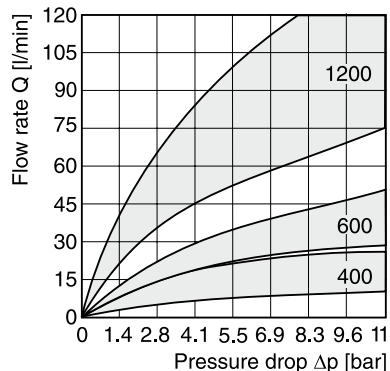
Controlled flow vs. pressure drop



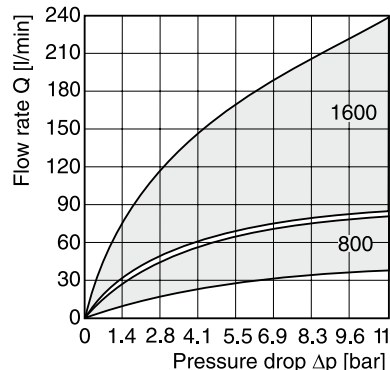
All characteristic curves measured with HLP46 at 50 °C.

Reverse flow vs. pressure drop at minimum and maximum settings

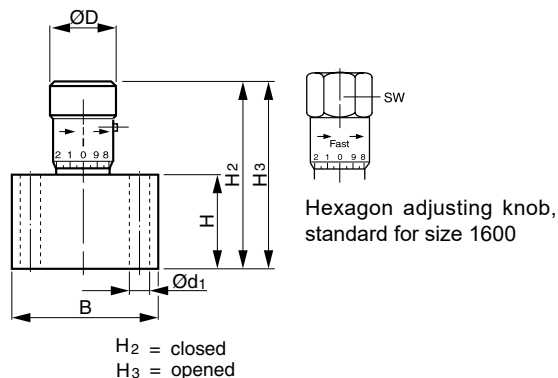
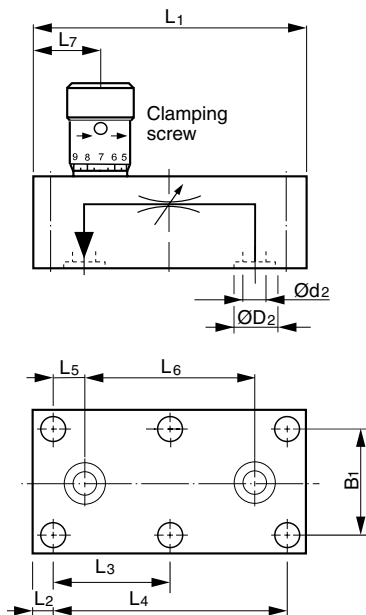
Sizes 400, 600 and 1200



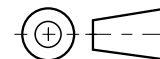
Sizes 800 and 1600



Dimensions



Hexagon adjusting knob, standard for size 1600



Size	L1	L2	L3	L4	L5	L6	L7	B	B1	H	H2	H3	Ød1	Ød2	ØD2	ØD	SW
400	85.9	6.4	–	72.8	9.3	54.2	21.3	44.5	33.3	28.4	57.7	62.7	6.8	7.1	13.3	20.6	–
600	101.6	6.4	–	88.9	10.4	68.0	25.4	50.8	38.1	31.8	67.8	73.4	7.0	8.6	16.0	25.4	–
800	117.3	6.4	–	104.9	12.7	79.5	44.5	57.2	44.4	44.5	95.0	102.6	7.0	11.9	19.1	30.0	–
1200	142.7	9.7	61.7	123.7	15.7	91.9	40.4	69.9	54.1	57.2	115.8	128.5	9.5	16.8	24.0	34.8	–
1600	171.5	12.7	73.2	146.1	19.1	107.9	49.3	76.2	60.4	69.9	158.2	175.3	9.5	22.4	32.0	–	47.5